

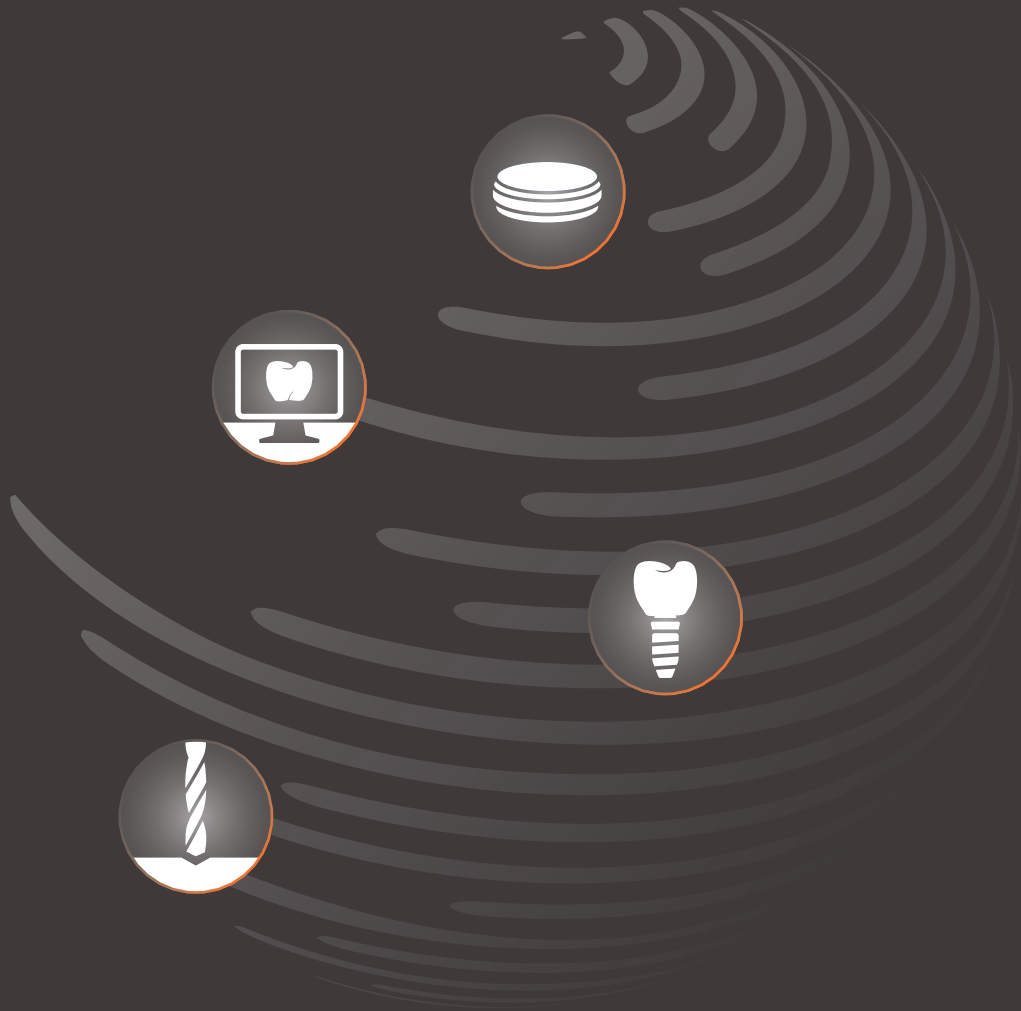
A close-up photograph of a dental lathe in operation. A sharp metal tool is positioned above a cylindrical metal workpiece, which is being rotated. The background shows several other similar cylindrical components in various stages of production, creating a sense of a busy manufacturing environment. The lighting is dramatic, with strong highlights and deep shadows, emphasizing the metallic textures and the precision of the machinery.

***DDSolidConnect<sup>®</sup>***

Product catalog  
**Implant**  
**Components**

CLOSE TO **YOU**

# Welcome to **your** Universe



Materials

Technologies

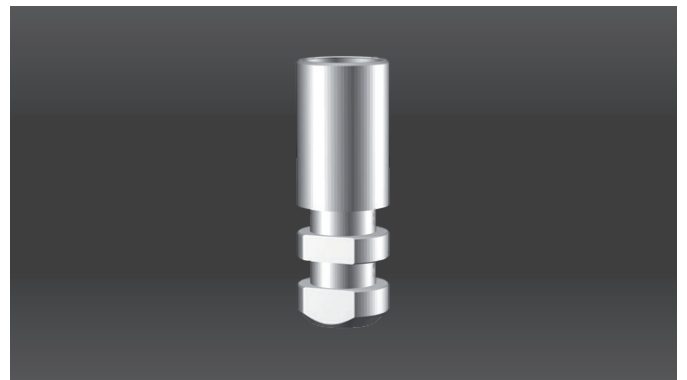
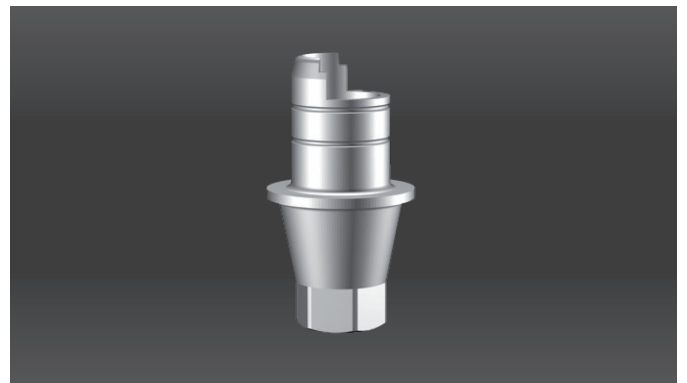
Implant Components

Milling Services

<b>Components</b>		06
	Prefab	08
	Ti-Base	09
	Ti-Base 2CUT	10
	Ti-Base 2CUT noLock	11
	Scanbody	12
	Analog	13
	Screw	14
	Prefab ring holder	15
<b>Series</b>		
	System overview	16
AAS-Serie	compatible with: DENTSPLY Implants® / Astra Tech®	18
BSK-Serie	compatible with: Bredent / Sky	20
CCA-Serie	compatible with: Camlog® / Camlog®	22
CCO-Serie	compatible with: Camlog® / Conelog®	24
DEV-Serie	compatible with: DENTSPLY Implants® / Astra EV®	26
DFX-Serie	compatible with: DENTSPLY Implants® / Frialit® / Xive®	28
MAR-Serie	compatible with: MegaGen / AnyRidge®	30
MMI-Serie	compatible with: Medentis Medical® / ICX®	32
MSE-Serie	compatible with: MIS Implants® / Seven®	34
NBR-Serie	compatible with: Nobel Biocare™ / Brånemark®	36
NNA-Serie	compatible with: Nobel Biocare™ / Nobel Active™	38
NRE-Serie	compatible with: Nobel Biocare™ / Replace Select®	40
OTS-Serie	compatible with: Osstem Implant / TS	42
SBO-Serie	compatible with: Straumann / Bone Level®	44
SSY-Serie	compatible with: Straumann / SynOcta®	46
TSP-Serie	compatible with: Thommen Medical / SPI®	48
ZTA-Serie	compatible with: Zimmer Dental / Tapered Screw-Vent®	50
<b>Accessories</b>		52

## »To ensure life quality, top performance has to be anchored.«

This is the guiding principle of our motivation. The focus of the development was to make modern and future oriented care accessible to a large number of patients. Therefore, we are constantly researching and developing the reliability of our prefab abutments, titanium bonding bases and screw systems. The result: DD Solid Connect® implant components that impresses in terms of precision and safety. All »Made in Germany«.



# Perfect prosthetic is more than the sum of its parts

All you need from a single source. DD components, materials and technology are perfectly matched in their function and aesthetics.

## DDcubeONE®

High strength – cubic zirconia system



Balance of translucency and strength.  
Good masking – less color changes on metal abutments.



The titanium grade 5 ELI implant screw offers perfect grip, just like the original.



## DDLabTec

Automated Micro CAM Systems

Machinery and CAM Software for the highest level of precision and maximum productivity.



## DDcontrast®

Color and form concept by Andreas Nolte

The color and texture system gives full monolithic restorations optimum color dynamics, vivid depth effect and various intensities of fluorescence.

## DDSolidConnect®

High Precision Implant Components

Titanium abutment made from DD Prefab to fit individual requirements.

DD Solid Connect® components offer perfect symbiosis with the original implant.



# There's no question ...

... that we do not have to talk about our conditions, it is always THE BEST PRICE!  
You pay for the highest quality – and not a penny more.





- Delivery with 2 screws
- Design up to the implant level



## ✓ Benefits

- Design up to implant level
- Highest level of implant precision
- Complete system with patented holder and tools
- Simultaneous rotation protection (vibration breaker)
- Delivery including 2 screws
- Screw seat identical to original abutment
- High profitability
- Easy to handle

## 🔧 Use

- Available for all common implant systems
- Simple use with matched CAD & CAM libraries
- Libraries are also available for other scanbodies (nt-trading® and Medentika®)
- Usage of the original patient screw possible

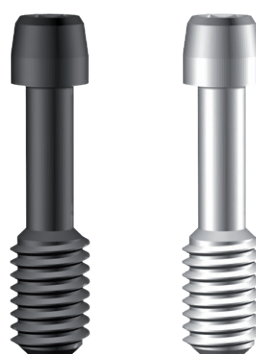
## 🔍 Material




- Titanium grade 5-ELI (Prefab)
- Titanium grade 5-ELI (Final screw)
- Stainless steel 1.4305 (Lab screw)

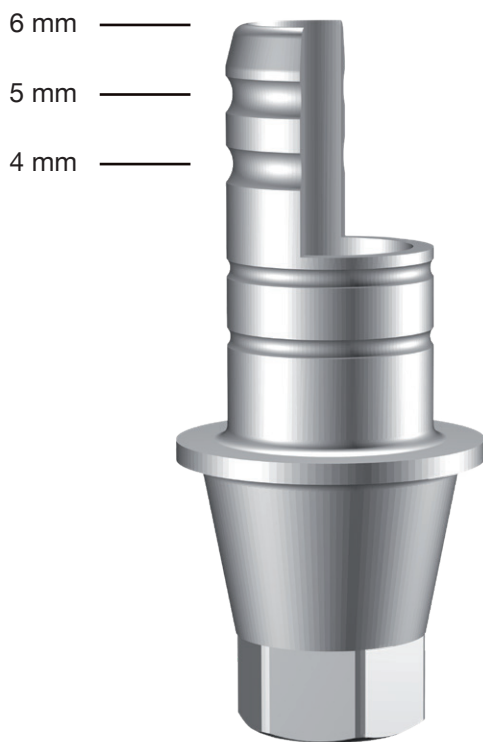




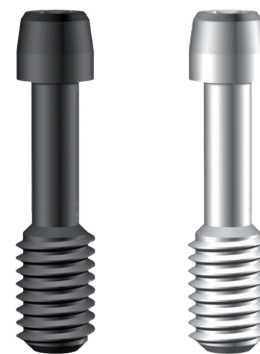
- Delivery with 2 screws
- Space-saving design for small gaps



 Benefits	 Use	 Material
<ul style="list-style-type: none"> <li>■ Highest level of interface precision</li> <li>■ Anti-rotation-protection (indicated for zirconium abutments and implant bridges)</li> <li>■ Retention grooves providing optimised bond connection</li> <li>■ Delivery includes 2 screws</li> <li>■ Screw seat identical to original abutment</li> <li>■ High profitability</li> <li>■ Easy to handle</li> </ul>	<ul style="list-style-type: none"> <li>■ For hybrid abutments, in particular zirconium, but also for PMMA or PEEK used for temporary restorations</li> <li>■ Labside bonding is possible because of anti-rotation-protection</li> <li>■ Libraries are also available for other scanbodies (nt-trading® and Medentika®)</li> <li>■ Usage of the original patient screw possible</li> </ul>	<ul style="list-style-type: none"> <li>■ Titanium grade 5-ELI (Ti-base)</li> <li>■ Titanium grade 5-ELI (Final screw)</li> <li>■ Stainless steel 1.4305 (Lab screw)</li> </ul>



- Delivery with 2 screws
- Space-saving design for small gaps



## ✓ Benefits

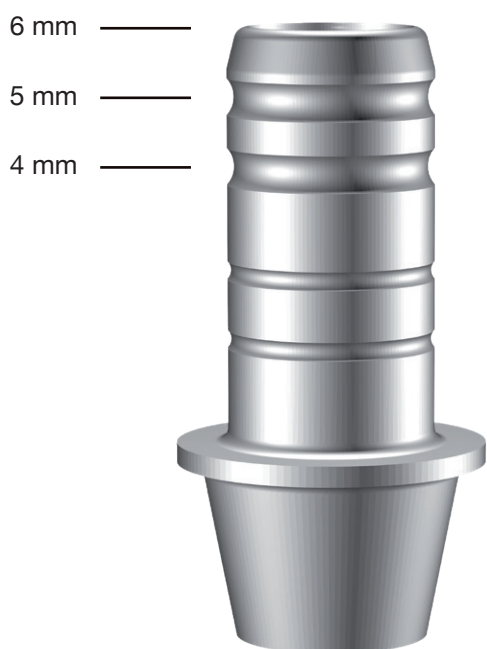
- Highest level of interface precision
- Anti-rotation-protection (indicated for zirconium abutments)
- Retention grooves providing optimised bond connection
- Delivery includes 2 screws
- Screw seat identical to original abutment
- High profitability
- Easy to handle
- Can be shortened to 5 mm and 4 mm. Grooves guarantee exact cutting

## 🔧 Use

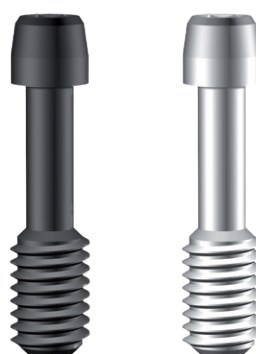
- For hybrid abutments, in particular zirconium, but also for PMMA or PEEK used for temporary restorations
- Labside bonding is possible because of anti-rotation-protection
- Libraries are also available for other scanbodies (nt-trading® and Medentika®)
- Usage of the original patient screw possible

## 🔍 Material

- Titanium grade 5-ELI (Ti-base)
- Titanium grade 5-ELI (Final screw)
- Stainless steel 1.4305 (Lab screw)



- Delivery with 2 screws
- Space-saving design for small gaps



## Benefits

- Highest level of interface precision
- 360° rotation on both sides of the Ti-Base
- Retention grooves providing optimised bond connection
- Delivery includes 2 screws
- Screw seat identical to original abutment
- High profitability
- Easy to handle



## Use

- Ideal for the treatment of pontoon and bridges
- Libraries are also available for other scanbodies (nt-trading® and Medentika®)
- Usage of the original patient screw possible

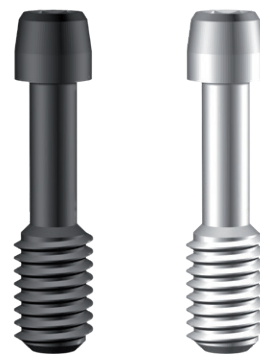


## Material

- Titanium grade 5-ELI (Ti-base)
- Titanium grade 5-ELI (Final screw)
- Stainless steel 1.4305 (Lab screw)



- Space-saving design for small gaps
- Optimised scan behaviour due to the material combination



## ✓ Benefits

- Optimised scan behaviour due to PEEK head, preventing reflections
- Small space requirement, because of the slim design
- Tried and tested material concept
- Made for intraoral and extraoral use (medical device class I)
- Autoclavable (no bond connection)
- Clear referencing (best fit) with CAD library
- Delivery includes 2 screws
- High profitability

## 🔧 Use

- For intraoral use, the dentist can use his original tools
- Long life span due to high-quality titanium interface. If the torque (10 Ncm) is maintained, there is no wear on the interface
- Simple alignment
- Libraries are also available for other scanbodies (nt-trading® and Medentika®)

## 🔍 Material

- Titanium grade 5-ELI
- DD peek MED white
- Titanium grade 5-ELI (Final screw)
- Stainless steel 1.4305 (Lab screw)



- Optimum contour for model fabrication

## ✓ Benefits

- highest interface precision
- anti-rotation protection by flattened edges
- easy to handle
- screw seat identical to original implant
- high profitability

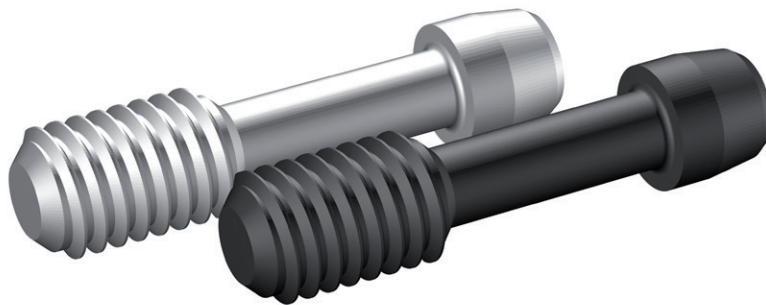
## 🔧 Use

- Generica of the original implant
- Usage of the original laboratory screw possible
- easy positioning
- suitable for plaster models

## 🔍 Material

- Stainless steel 1.4305

- Available as single product
- Different colours for identification



## ✓ Benefits

- Lab screw
  - Made of stainless steel
  - Torx® screw head T6 for all systems
- Final screw
  - Titanium grade 5-ELI
  - Screw head identical to original manufacturer
  - No damage to the internal geometry even at high torque
- Long life span due to verified torque tests

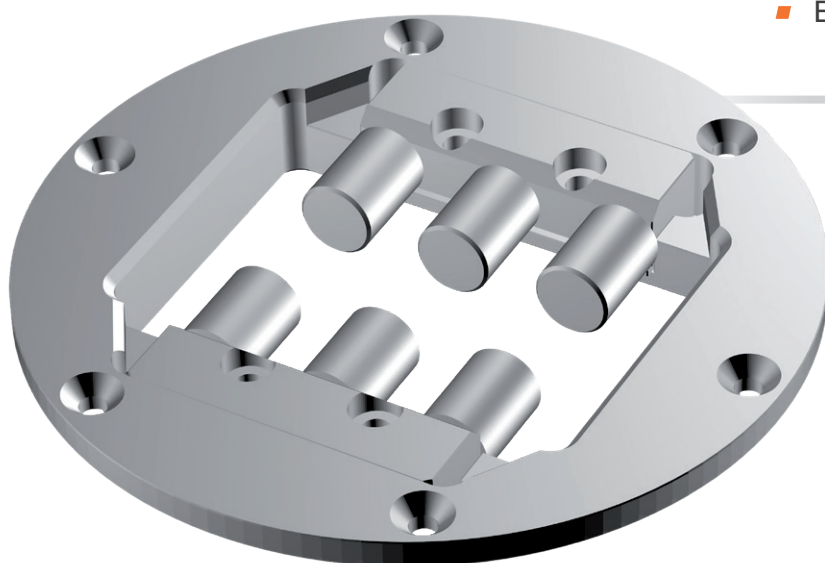
## 🔧 Use

- For intraoral use the dentist can use his original tools
- Can stay sealed because of separate packing
- Use in the original implant and analog possible

## 🔍 Material

- Titanium grade 5-ELI (Final screw)
- Stainless steel 1.4305 (Lab screw)

- Patented design
- Easy to use



## ✓ Benefits

- Complete system with patented holder and tools
- Anti-rotation-protection and vibration breaker at the same time
- Easy to handle
- Simultaneous processing of 6 different interfaces possible

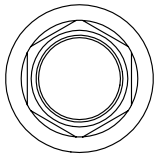
## 🔧 Compatibility

- Machines
  - DD LabTec (i.mes i.core), Yenadent
  - Other machines on request
- CAM software
  - Imes V4.7, Imes V5, SUM3D,
  - DD smartCAM 2.0 by workNC Dental
  - Further CAM software variants on request
- CAD software
  - Exocad, 3Shape
  - Further CAD software variants on request

## 🔍 Material

- Stainless steel 1.4305

\* Depending on the CAM software used, there may occur additional costs for implementation, calibration and activation.



**AAS-Series**

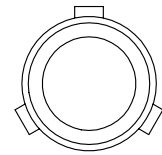
DENTSPLY Implants®  
Astra Tech®



Coming soon

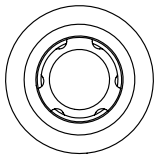
**BSK-Series**

Bredent  
Sky



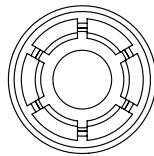
**CCA-Series**

Camlog®  
Camlog®



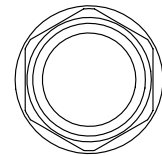
**CCO-Series**

Camlog®  
Conelog®



**DEV-Series**

DENTSPLY Implants®  
Astra EV®



**DFX-Series**

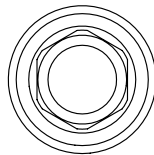
DENTSPLY Implants®  
Frialit® / Xive®



Coming soon

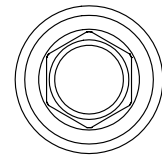
**MAR-Series**

MegaGen  
AnyRidge®



**MMI-Series**

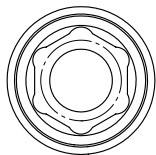
Medentis Medical®  
ICX®



**MSE-Series**

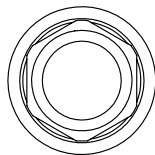
MIS Implants®  
Seven®





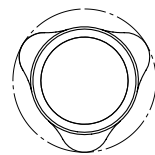
### **NBR-Series**

Nobel Biocare™  
Brånemark®



### **NNA-Series**

Nobel Biocare™  
Nobel Active™



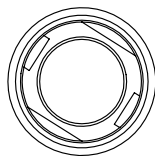
### **NRE-Series**

Nobel Biocare™  
Replace Select®



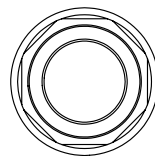
### **OTS-Series**

Osstem Implant  
TS



### **SBO-Series**

Straumann  
Bone Level®



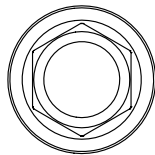
### **SSY-Series**

Straumann  
SynOcta®



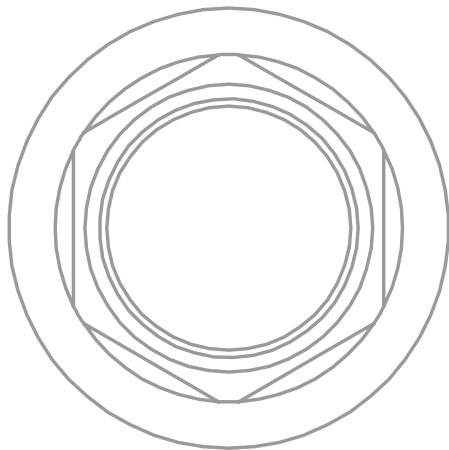
### **TSP-Series**

Thommen Medical  
SPI®



### **ZTA-Series**

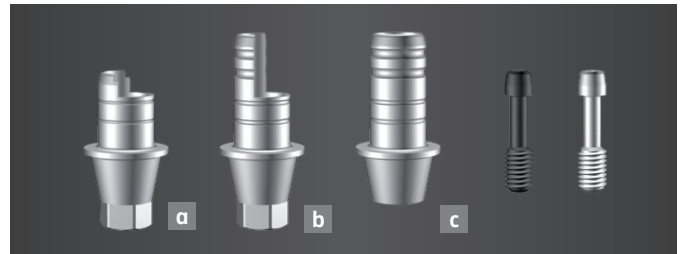
Zimmer Dental  
Tapered Screw-Vent®



### Prefab set

Includes implant screw and laboratory screw

1



**a** Ti-Base set

**b** Ti-Base 2CUT set

**c** Ti-Base 2CUT noLock set

Includes implant screw and laboratory screw

2



### Scanbody set

Includes implant screw and laboratory screw

To be used intraoral & extraoral (medical grade product class I)

3



### Lab analog

4

Digital analog (coming soon)

5


Laboratory screw (black)

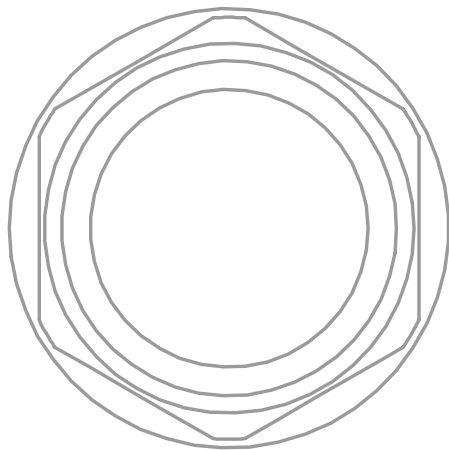
6

Final screw (silver)

7

	AAS 35/40 (Ø 3,5/4,0 mm)	AAS 45/50 (Ø 4,5/5,0 mm)	Price euro/net
<b>1</b>	DDAASPF35S	DDAASPF45S	29,90
<b>2</b> <small>a</small>	DDAASTB35S	DDAASTB45S	39,90
<small>b</small>	DDAASKL35S	DDAASKL45S	39,90
<small>c</small>	DDAASNL35S	DDAASNL45S	39,90
<b>3</b>	DDAASSB35S	DDAASSB45S	29,90
<b>4</b>	DDAASLA35	DDAASLA45	9,90
<b>5</b>	COMING SOON		19,90
<b>6</b>	DDAASLS35	DDAASLS45	6,00
<b>7</b>	DDAASIS35	DDAASIS45	9,90
<b>Torque Final screw</b>	25 Ncm	25 Ncm	
<b>Torque Lab screw</b>	10 Ncm	10 Ncm	

 Consult instructions for use



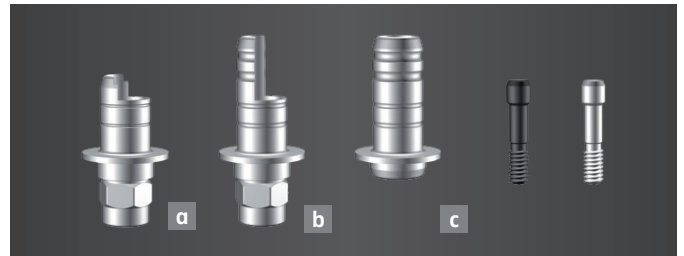
**Coming soon**



**Prefab set**

Includes implant screw and laboratory screw

**1**



**a** Ti-Base set

**b** Ti-Base 2CUT set

**c** Ti-Base 2CUT noLock set

Includes implant screw and laboratory screw

**2**



**Scanbody set**

Includes implant screw and laboratory screw

To be used intraoral & extraoral (medical grade product class I)

**3**



**Lab analog**

**4**

**Digital analog (coming soon)**

**5**


**Laboratory screw (black)**

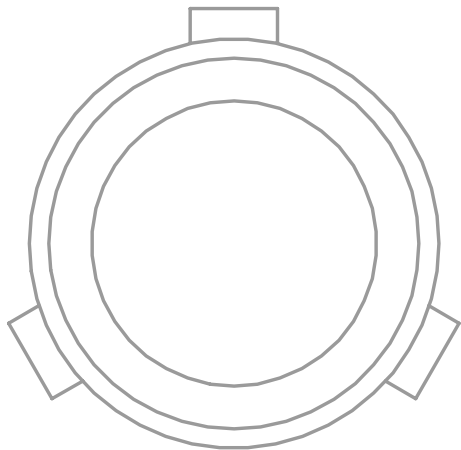
**6**

**Final screw (silver)**

**7**

	BSK 35 (Ø 3,5 mm NP)	BSK 40/45 (Ø 4,0/4,5 mm RP)	Price euro/net
<b>1</b>	DDBSKPF35S	DDBSKPF40S	29,90
<b>2</b> <b>a</b>	DDBSKTB35S	DDBSKTB40S	39,90
<b>b</b>	DDBSKKL35S	DDBSKKL40S	39,90
<b>c</b>	DDBSKNL35S	DDBSKNL40S	39,90
<b>3</b>	DDBSKSB35S	DDBSKSB40S	29,90
<b>4</b>		COMING SOON	9,90
<b>5</b>		COMING SOON	19,90
<b>6</b>	DDBSKLS40	DDBSKLS40	6,00
<b>7</b>	DDBSKIS40	DDBSKIS40	9,90
<b>Torque</b> Final screw	25 Ncm	25 Ncm	
<b>Torque</b> Lab screw	10 Ncm	10 Ncm	

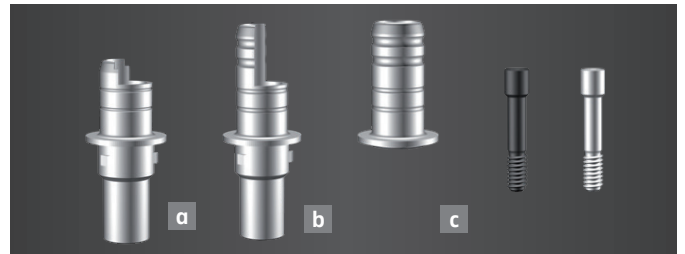
 Consult instructions for use



**Prefab set**

Includes implant screw and laboratory screw

1



**a Ti-Base set**

**b Ti-Base 2CUT set**

**c Ti-Base 2CUT noLock set**

Includes implant screw and laboratory screw

2



**Scanbody set**

Includes implant screw and laboratory screw

To be used intraoral & extraoral (medical grade product class I)

3



**Lab analog**

4

**Digital analog (coming soon)**

5


**Laboratory screw (black)**

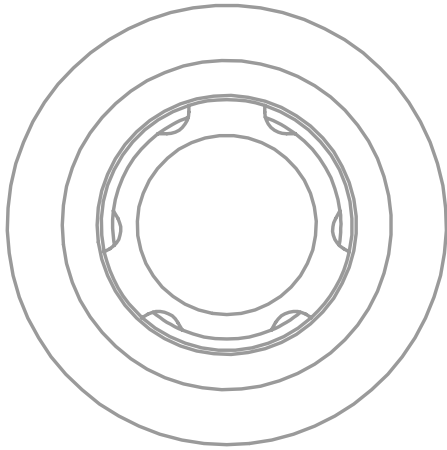
6

**Final screw (silver)**

7

	CCA 33 (Ø 3,3 mm)	CCA 38 (Ø 3,8 mm)	CCA 43 (Ø 4,3 mm)	CCA 50 (Ø 5,0 mm)	Price euro/net
<b>1</b>	DDCCAPF33S	DDCCAPF38S	DDCCAPF43S	DDCCAPF50S	29,90
<b>2</b> <small>a</small>	DDCCATB33S	DDCCATB38S	DDCCATB43S	DDCCATB50S	39,90
<small>b</small>	DDCCAKL33S	DDCCAKL38S	DDCCAKL43S	DDCCAKL50S	39,90
<small>c</small>	DDCCANL33S	DDCCANL38S	DDCCANL43S	DDCCANL50S	39,90
<b>3</b>	DDCCASB33S	DDCCASB38S	DDCCASB43S	DDCCASB50S	29,90
<b>4</b>	DDCCALA33	DDCCALA38	DDCCALA43	DDCCALA50	9,90
<b>5</b>	COMING SOON				19,90
<b>6</b>	DDCCALS43	DDCCALS43	DDCCALS43	DDCCALS50	6,00
<b>7</b>	DDCCAIS43	DDCCAIS43	DDCCAIS43	DDCCAIS50	9,90
<b>Torque Final screw</b>	20 Ncm	20 Ncm	20 Ncm	20 Ncm	
<b>Torque Lab screw</b>	10 Ncm	10 Ncm	10 Ncm	10 Ncm	

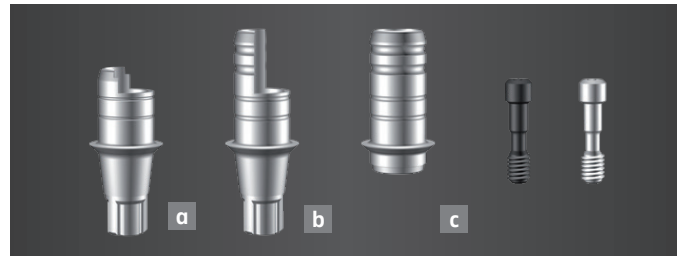
 Consult instructions for use



**Prefab set**

Includes implant screw and laboratory screw

1



**a** Ti-Base set

**b** Ti-Base 2CUT set

**c** Ti-Base 2CUT noLock set

Includes implant screw and laboratory screw

2



**Scanbody set**

Includes implant screw and laboratory screw

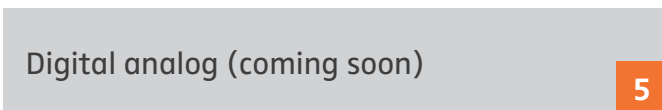
To be used intraoral & extraoral (medical grade product class I)

3



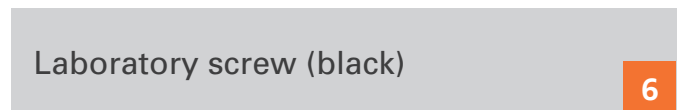
**Lab analog (coming soon)**

4



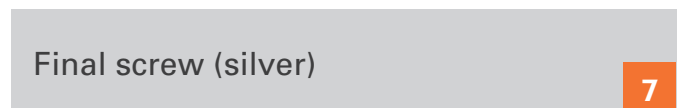
**Digital analog (coming soon)**

5



**Laboratory screw (black)**

6




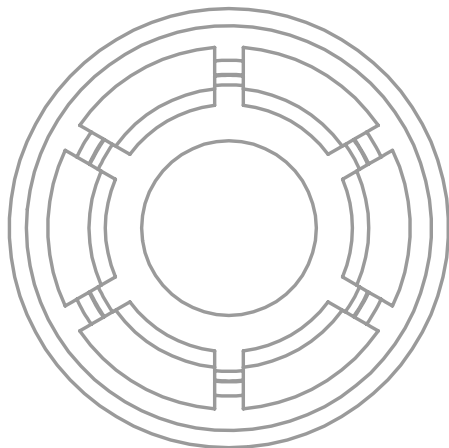
**Final screw (silver)**

7



	CCO 33 (Ø 3,3 mm)	CCO 38 (Ø 3,8 mm)	CCO 43 (Ø 4,3 mm)	CCO 50 (Ø 5,0 mm)	Price euro/net
<b>1</b>	DDCCOPF33S	DDCCOPF38S	DDCCOPF43S	DDCCOPF50S	29,90
<b>2</b> <small>a</small>	DDCCOTB33S	DDCCOTB38S	DDCCOTB43S	DDCCOTB50S	39,90
<small>b</small>	DDCCOKL33S	DDCCOKL38S	DDCCOKL43S	DDCCOKL50S	39,90
<small>c</small>	DDCCONL33S	DDCCONL38S	DDCCONL43S	DDCCONL50S	39,90
<b>3</b>	DDCCOSB33S	DDCCOSB38S	DDCCOSB43S	DDCCOSB50S	29,90
<b>4</b>	COMING SOON				9,90
<b>5</b>	COMING SOON				19,90
<b>6</b>	DDCCOLS43	DDCCOLS43	DDCCOLS43	DDCCOLS50	6,00
<b>7</b>	DDCCOIS43	DDCCOIS43	DDCCOIS43	DDCCOIS50	9,90
<b>Torque Final screw</b>	20 Ncm	20 Ncm	20 Ncm	20 Ncm	
<b>Torque Lab screw</b>	10 Ncm	10 Ncm	10 Ncm	10 Ncm	

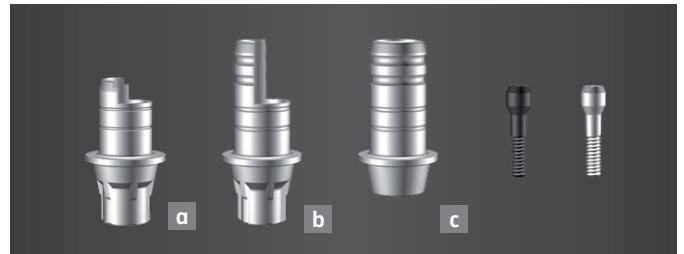
 Consult instructions for use



**Prefab set**

Includes implant screw and laboratory screw

1



**a Ti-Base set**

**b Ti-Base 2CUT set**

**c Ti-Base 2CUT noLock set**

Includes implant screw and laboratory screw

2



**Scanbody set**

Includes implant screw and laboratory screw  
To be used intraoral & extraoral (medical grade product class I)

3



**Lab analog (coming soon)**

4

**Digital analog (coming soon)**

5


**Laboratory screw (black)**

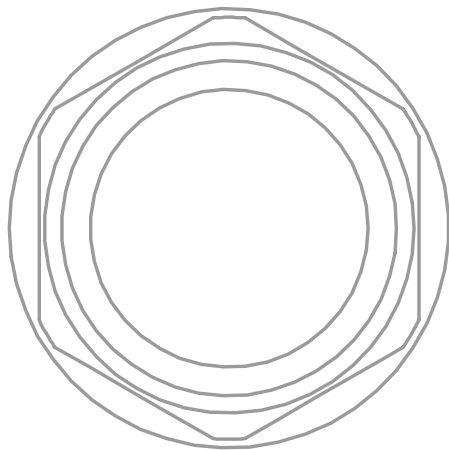
6

**Final screw (silver)**

7

	DEV 30 (Ø 3,0 mm)	DEV 36 (Ø 3,6 mm)	DEV 42 (Ø 4,2 mm)	DEV 48 (Ø 4,8 mm)	DEV 54 (Ø 5,4 mm)	Price euro/net
<b>1</b>	DDDEVPF30S	DDDEVPF36S	DDDEVPF42S	DDDEVPF48S	DDDEVPF54S	29,90
<b>2</b> <b>a</b>	DDDEVTB30S	DDDEVTB36S	DDDEVTB42S	DDDEVTB48S	DDDEVTB54S	39,90
<b>b</b>	DDDEVKL30S	DDDEVKL36S	DDDEVKL42S	DDDEVKL48S	DDDEVKL54S	39,90
<b>c</b>	DDDEVNL30S	DDDEVNL36S	DDDEVNL42S	DDDEVNL48S	DDDEVNL54S	39,90
<b>3</b>	DDDEVSB30S	DDDEVSB36S	DDDEVSB42S	DDDEVSB48S	DDDEVSB54S	29,90
<b>4</b>			COMING SOON			9,90
<b>5</b>			COMING SOON			19,90
<b>6</b>	DDDEVLS30	DDDEVLS36	DDDEVLS42	DDDEVLS54	DDDEVLS54	6,00
<b>7</b>	DDDEVIS30	DDDEVIS36	DDDEVIS42	DDDEVIS54	DDDEVIS54	9,90
Torque Final screw	25 Ncm	25 Ncm	25 Ncm	25 Ncm	25 Ncm	
Torque Lab screw	10 Ncm	10 Ncm	10 Ncm	10 Ncm	10 Ncm	

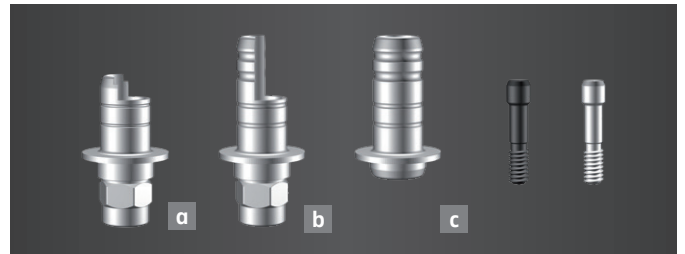
 Consult instructions for use



**Prefab set**

Includes implant screw and laboratory screw

1



**a Ti-Base set**

**b Ti-Base 2CUT set**

**c Ti-Base 2CUT noLock set**

Includes implant screw and laboratory screw

2



**Scanbody set**

Includes implant screw and laboratory screw

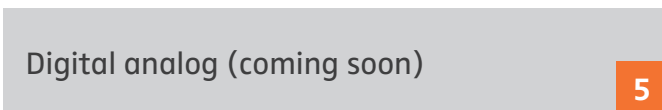
To be used intraoral & extraoral (medical grade product class I)

3



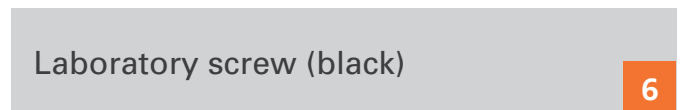
**Lab analog**

4



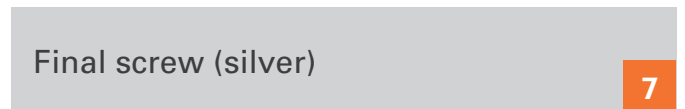
**Digital analog (coming soon)**

5



**Laboratory screw (black)**


6

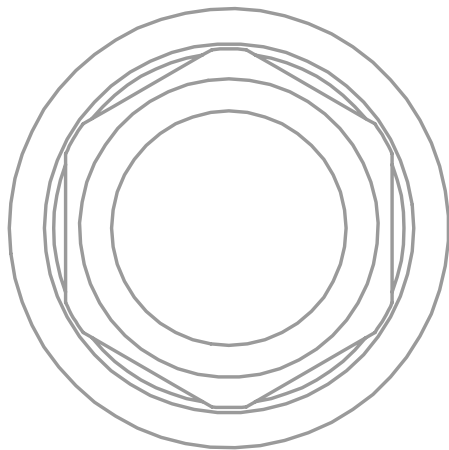


**Final screw (silver)**

7

	DFX 34 (Ø 3,4 mm)	DFX 38 (Ø 3,8 mm)	DFX 45 (Ø 4,5 mm)	DFX 55 (Ø 5,5 mm)	Price euro/net
<b>1</b>	DDDFXPF34S	DDDFXPF38S	DDDFXPF45S	DDDFXPF55S	29,90
<b>2</b> <small>a</small>	DDDFXTB34S	DDDFXTB38S	DDDFXTB45S	DDDFXTB55S	39,90
<small>b</small>	DDDFXKL34S	DDDFXKL38S	DDDFXKL45S	DDDFXKL55S	39,90
<small>c</small>	DDDFXNL34S	DDDFXNL38S	DDDFXNL45S	DDDFXNL55S	39,90
<b>3</b>	DDDFXSB34S	DDDFXSB38S	DDDFXSB45S	DDDFXSB55S	29,90
<b>4</b>	DDDFXLA34	DDDFXLA38	DDDFXLA45	DDDFXLA55	9,90
<b>5</b>	COMING SOON				19,90
<b>6</b>	DDDFXLS55	DDDFXLS55	DDDFXLS55	DDDFXLS55	6,00
<b>7</b>	DDDFXIS55	DDDFXIS55	DDDFXIS55	DDDFXIS55	9,90
Torque Final screw	25 Ncm	25 Ncm	25 Ncm	25 Ncm	
Torque Lab screw	10 Ncm	10 Ncm	10 Ncm	10 Ncm	

 Consult instructions for use



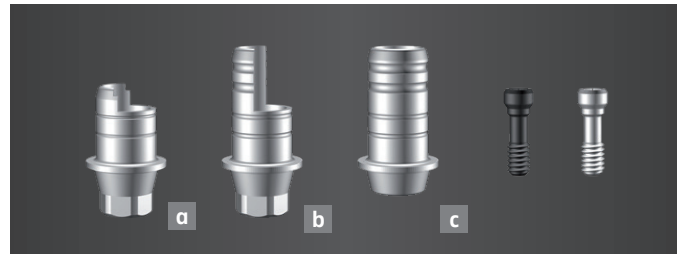
**Coming soon**



**Prefab set**

Includes implant screw and laboratory screw

**1**



**a** Ti-Base set

**b** Ti-Base 2CUT set

**c** Ti-Base 2CUT noLock set

Includes implant screw and laboratory screw

**2**



**Scanbody set**

Includes implant screw and laboratory screw  
To be used intraoral & extraoral (medical grade product class I)

**3**



**Lab analog**

**4**

**Digital analog (coming soon)**

**5**


**Laboratory screw (black)**

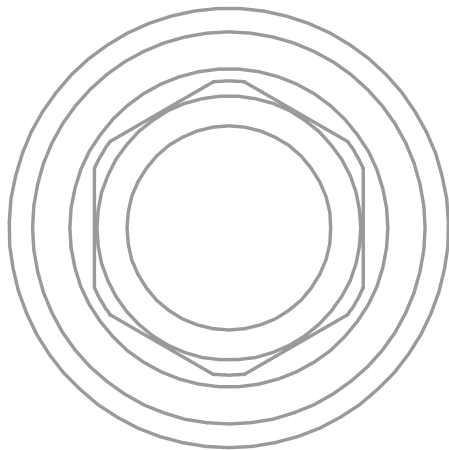
**6**

**Final screw (silver)**

**7**

	MAR 35/40 (Ø 3,5/4,0 mm)	MAR 45/50 (Ø 4,5/5,0 mm)	MAR 55/60 (Ø 5,5/6,0 mm)	Price euro/net
<b>1</b>	DDMARPF35S	DDMARPF35S	DDMARPF35S	29,90
<b>2</b> <small>a</small>	DDMARTB35S	DDMARTB45S	DDMARTB55S	39,90
<small>b</small>	DDMARKL35S	DDMARKL45S	DDMARKL55S	39,90
<small>c</small>	DDMARNL35S	DDMARNL45S	DDMARNL55S	39,90
<b>3</b>	DDMARSB35S	DDMARSB35S	DDMARSB35S	29,90
<b>4</b>		COMING SOON		9,90
<b>5</b>		COMING SOON		19,90
<b>6</b>	DDMARLS35	DDMARLS35	DDMARLS35	6,00
<b>7</b>	DDMARIS35	DDMARIS35	DDMARIS35	9,90
<b>Torque Final screw</b>	30 Ncm	30 Ncm	30 Ncm	
<b>Torque Lab screw</b>	10 Ncm	10 Ncm	10 Ncm	

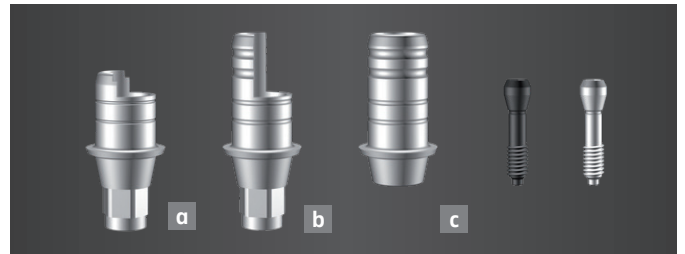
 Consult instructions for use



**Prefab set**

Includes implant screw and laboratory screw

1



**a Ti-Base set**

**b Ti-Base 2CUT set**

**c Ti-Base 2CUT noLock set**

Includes implant screw and laboratory screw

2



**Scanbody set**

Includes implant screw and laboratory screw  
To be used intraoral & extraoral (medical grade product class I)

3



**Lab analog (coming soon)**

4

**Digital analog (coming soon)**

5

**Laboratory screw (black)**

6


**Final screw (silver)**

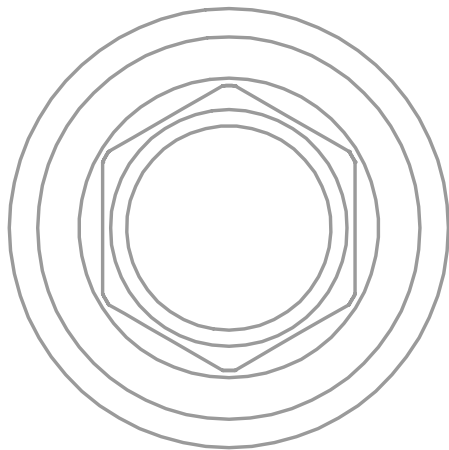
7



	MMI 41/48 (Ø 4,1/4,8 mm)	Price euro/net
<b>1</b>	DDMMIPF41S	29,90
<b>2</b>	DDMMITB41S	39,90
<b>a</b>		
<b>b</b>	DDMMIKL41S	39,90
<b>c</b>	DDMMINL41S	39,90
<b>3</b>	DDMMISB41S	29,90
<b>4</b>	COMING SOON	9,90
<b>5</b>	COMING SOON	19,90
<b>6</b>	DDMMILS41	6,00
<b>7</b>	DDMMIIS41	9,90

Torque Final screw	30 Ncm
Torque Lab screw	10 Ncm

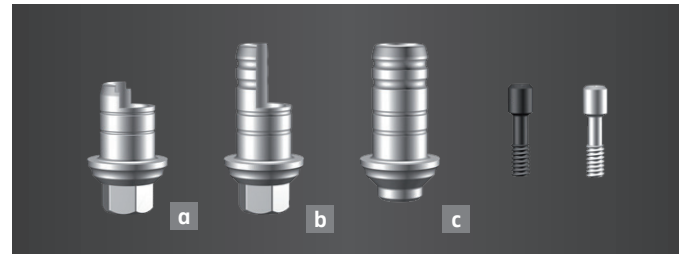
 Consult instructions for use



### Prefab set

Includes implant screw and laboratory screw

1



**a** Ti-Base set

**b** Ti-Base 2CUT set

**c** Ti-Base 2CUT noLock set

Includes implant screw and laboratory screw

2



### Scanbody set

Includes implant screw and laboratory screw

To be used intraoral & extraoral (medical grade product class I)

3



### Lab analog (coming soon)

4

### Digital analog (coming soon)

5


### Laboratory screw (black)

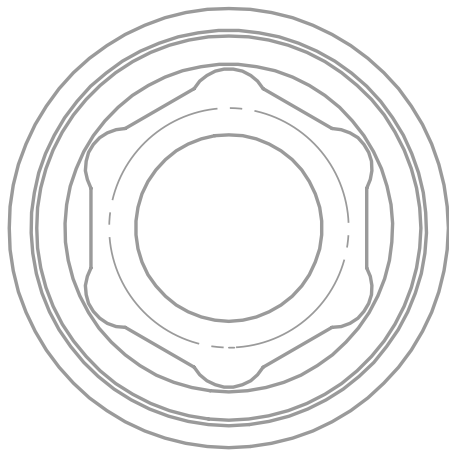
6

### Final screw (silver)

7

	MSE 33 (Ø 3,3 mm)	MSE 37/42 (Ø 3,75/4,2 mm)	MSE 50 (Ø 5,0 mm)	Price euro/net
<b>1</b>	DDMSEPF33S	DDMSEPF42S	DDMSEPF50S	29,90
<b>2</b> <small>a</small>	DDMSETB33S	DDMSETB42S	DDMSETB50S	39,90
<small>b</small>	DDMSEKL33S	DDMSEKL42S	DDMSEKL50S	39,90
<small>c</small>	DDMSENL33S	DDMSENL42S	DDMSENL50S	39,90
<b>3</b>	DDMSESB33S	DDMSESB42S	DDMSESB50S	29,90
<b>4</b>		COMING SOON		9,90
<b>5</b>		COMING SOON		19,90
<b>6</b>	DDMSELS33	DDMSELS50	DDMSELS50	6,00
<b>7</b>	DDMSEIS33	DDMSEIS50	DDMSEIS50	9,90
<b>Torque Final screw</b>	30 Ncm	30 Ncm	30 Ncm	
<b>Torque Lab screw</b>	10 Ncm	10 Ncm	10 Ncm	

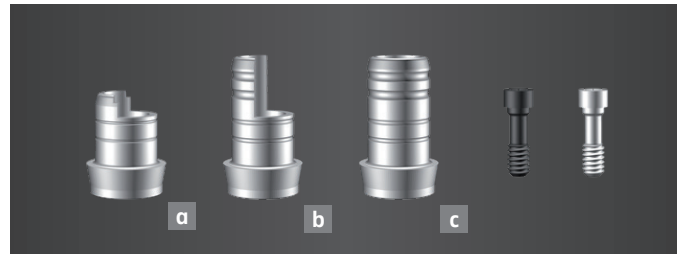
 Consult instructions for use



**Prefab set**

Includes implant screw and laboratory screw

1



**a Ti-Base set**

**b Ti-Base 2CUT set**

**c Ti-Base 2CUT noLock set**

Includes implant screw and laboratory screw

2



**Scanbody set**

Includes implant screw and laboratory screw  
To be used intraoral & extraoral (medical grade product class I)

3



**Lab analog**

4

**Digital analog (coming soon)**

5


**Laboratory screw (black)**

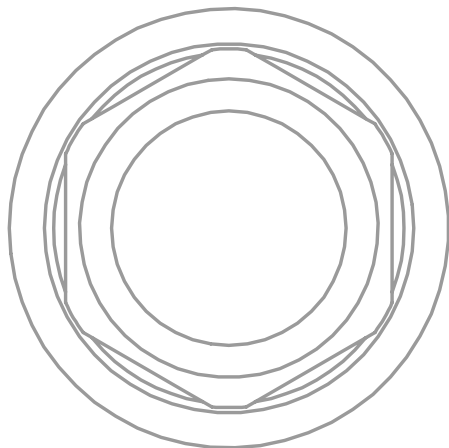
6

**Final screw (silver)**

7

	NBR 35 (Ø 3,5 mm)	NBR 41 (Ø 4,1 mm)	Price euro/net
<b>1</b>	DDNBRPF35S	DDNBRPF41S	29,90
<b>2</b> <b>a</b>	DDNBRTB35S	DDNBRTB41S	39,90
<b>b</b>	DDNBRKL35S	DDNBRKL41S	39,90
<b>c</b>	DDNBRNL35S	DDNBRNL41S	39,90
<b>3</b>	DDNBRSB35S	DDNBRSB41S	29,90
<b>4</b>	DDNBRLA35	DDNBRLA41	9,90
<b>5</b>	COMING SOON		19,90
<b>6</b>	DDNBRLS35	DDNBRLS41	6,00
<b>7</b>	DDNBRIS35	DDNBRIS41	9,90
Torque Final screw	35 Ncm	35 Ncm	
Torque Lab screw	10 Ncm	10 Ncm	

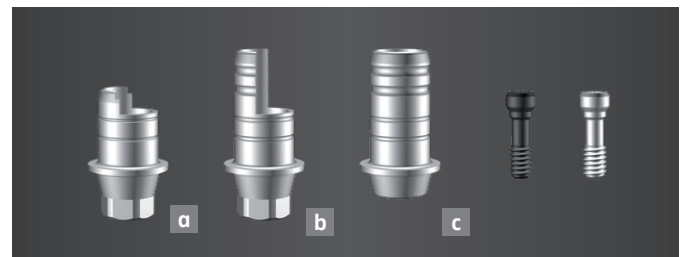
 Consult instructions for use



### Prefab set

Includes implant screw and laboratory screw

1



**a** Ti-Base set

**b** Ti-Base 2CUT set

**c** Ti-Base 2CUT noLock set

Includes implant screw and laboratory screw

2



### Scanbody set

Includes implant screw and laboratory screw  
To be used intraoral & extraoral (medical grade product class I)

3



### Lab analog

4

### Digital analog (coming soon)

5


### Laboratory screw (black)

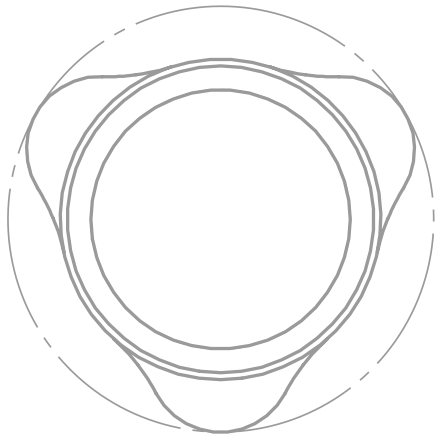
6

### Final screw (silver)

7

	NNA 35 (Ø 3,5 mm NP)	NNA 43/50 (Ø 4,3/5,0 mm RP)	Price euro/net
<b>1</b>	DDNNAPF35S	DDNNAPF43S	29,90
<b>2</b> <b>a</b>	DDNNATB35S	DDNNATB43S	39,90
<b>b</b>	DDNNAKL35S	DDNNAKL43S	39,90
<b>c</b>	DDNNANL35S	DDNNANL43S	39,90
<b>3</b>	DDNNASB35S	DDNNASB43S	29,90
<b>4</b>	DDNNALA35	DDNNALA43	9,90
<b>5</b>	COMING SOON		19,90
<b>6</b>	DDNNALS35	DDNNALS43	6,00
<b>7</b>	DDNNAIS35	DDNNAIS43	9,90
<b>Torque Final screw</b>	25 Ncm	35 Ncm	
<b>Torque Lab screw</b>	10 Ncm	10 Ncm	

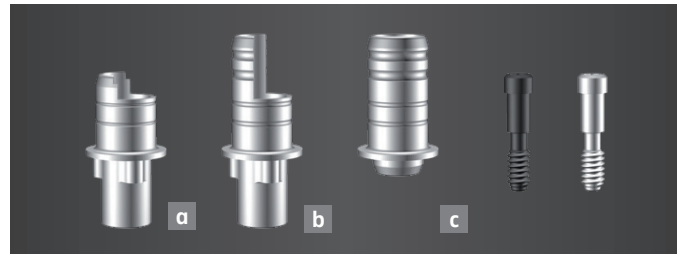
 Consult instructions for use



**Prefab set**

Includes implant screw and laboratory screw

1



**a Ti-Base set**

**b Ti-Base 2CUT set**

**c Ti-Base 2CUT noLock set**

Includes implant screw and laboratory screw

2



**Scanbody set**

Includes implant screw and laboratory screw  
To be used intraoral & extraoral (medical grade product class I)

3



**Lab analog**

4

**Digital analog (coming soon)**

5

**Laboratory screw (black)**


6

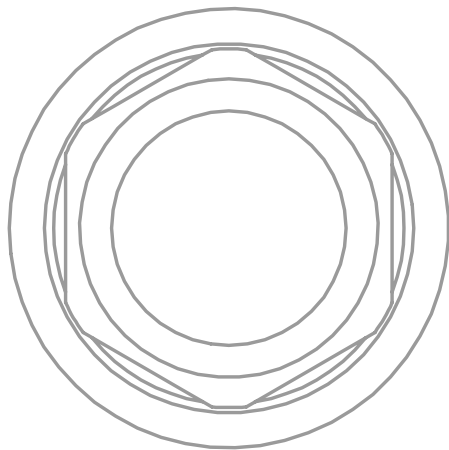
**Final screw (silver)**

7



	NRE 35 (Ø 3,5 mm NP)	NRE 43 (Ø 4,3 mm RP)	NRE 50 (Ø 5,0 mm WP)	Price euro/net
<b>1</b>	DDNREPF35S	DDNREPF43S	DDNREPF50S	29,90
<b>2</b> <small>a</small>	DDNRETB35S	DDNRETB43S	DDNRETB50S	39,90
<small>b</small>	DDNREKL35S	DDNREKL43S	DDNREKL50S	39,90
<small>c</small>	DDNRENL35S	DDNRENL43S	DDNRENL50S	39,90
<b>3</b>	DDNRESB35S	DDNRESB43S	DDNRESB50S	29,90
<b>4</b>	DDNRELA35	DDNRELA43	DDNRELA50	9,90
<b>5</b>	COMING SOON			19,90
<b>6</b>	DDNRELS35	DDNRELS50	DDNRELS50	6,00
<b>7</b>	DDNREIS35	DDNREIS50	DDNREIS50	9,90
<b>Torque Final screw</b>	35 Ncm	35 Ncm	35 Ncm	
<b>Torque Lab screw</b>	10 Ncm	10 Ncm	10 Ncm	

 Consult instructions for use



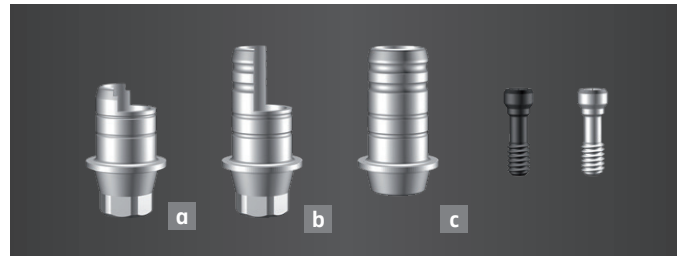
**Coming soon**



**Prefab set**

Includes implant screw and laboratory screw

**1**



**a** Ti-Base set

**b** Ti-Base 2CUT set

**c** Ti-Base 2CUT noLock set

Includes implant screw and laboratory screw

**2**



**Scanbody set**

Includes implant screw and laboratory screw

To be used intraoral & extraoral (medical grade product class I)

**3**



**Lab analog**

**4**

**Digital analog (coming soon)**

**5**


**Laboratory screw (black)**

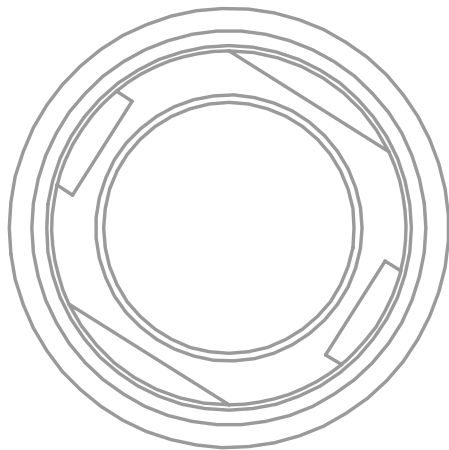
**6**

**Final screw (silver)**

**7**

	OTS 35 (Ø 3,5 mm M)	OTS 40/60 (Ø 4,0 – 6,0 mm R)	Price euro/net
<b>1</b>	DDOTSPF35S	DDOTSPF40S	29,90
<b>2</b> <b>a</b>	DDOTSTB35S	DDOTSTB40S	39,90
<b>b</b>	DDOTSKL35S	DDOTSKL40S	39,90
<b>c</b>	DDOTSNL35S	DDOTSNL40S	39,90
<b>3</b>	DDOTSSB35S	DDOTSSB40S	29,90
<b>4</b>		COMING SOON	9,90
<b>5</b>		COMING SOON	19,90
<b>6</b>	DDOTSLS35	DDOTSLS40	6,00
<b>7</b>	DDOTSIS35	DDOTSIS40	9,90
<b>Torque Final screw</b>	20 Ncm	20 Ncm	
<b>Torque Lab screw</b>	10 Ncm	10 Ncm	

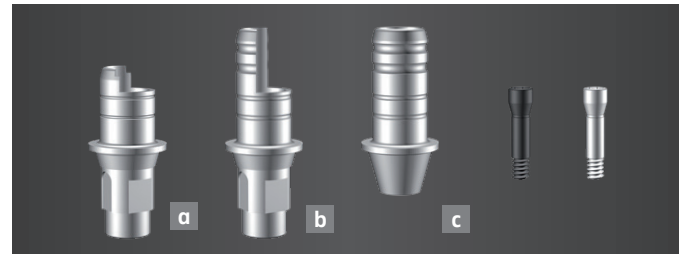
 Consult instructions for use



**Prefab set**

Includes implant screw and laboratory screw

1



**a Ti-Base set**

**b Ti-Base 2CUT set**

**c Ti-Base 2CUT noLock set**

Includes implant screw and laboratory screw

2



**Scanbody set**

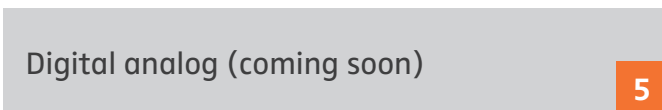
Includes implant screw and laboratory screw  
To be used intraoral & extraoral (medical grade product class I)

3



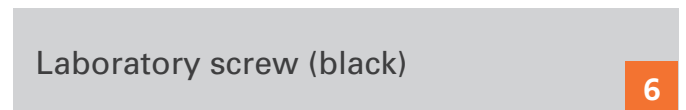
**Lab analog**

4



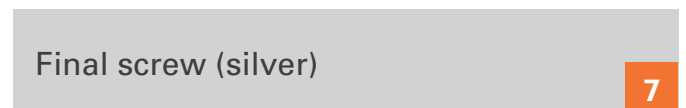
**Digital analog (coming soon)**

5



**Laboratory screw (black)**


6

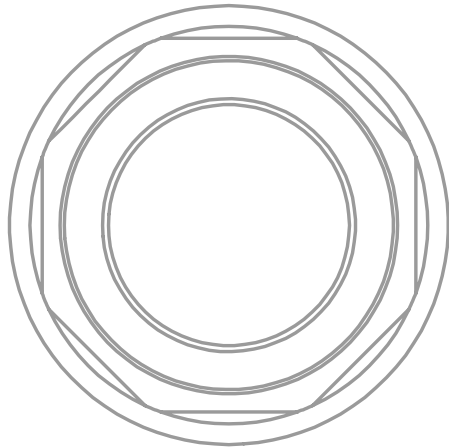


**Final screw (silver)**

7

	SBO 33 (Ø 3,3 mm NC)	SBO 41/48 (Ø 4,1/4,8 mm RC)	Price euro/net
<b>1</b>	DDSBOPF33S	DDSBOPF41S	29,90
<b>2</b> <small>a</small>	DDSBOTB33S	DDSBOTB41S	39,90
<small>b</small>	DDSBOKL33S	DDSBOKL41S	39,90
<small>c</small>	DDSBONL33S	DDSBONL41S	39,90
<b>3</b>	DDSBOSB33S	DDSBOSB41S	29,90
<b>4</b>	DDSBOLA33	DDSBOLA41	9,90
<b>5</b>	COMING SOON		19,90
<b>6</b>	DDSBOLS33	DDSBOLS41	6,00
<b>7</b>	DDSBOIS33	DDSBOIS41	9,90
<b>Torque Final screw</b>	35 Ncm	35 Ncm	
<b>Torque Lab screw</b>	10 Ncm	10 Ncm	

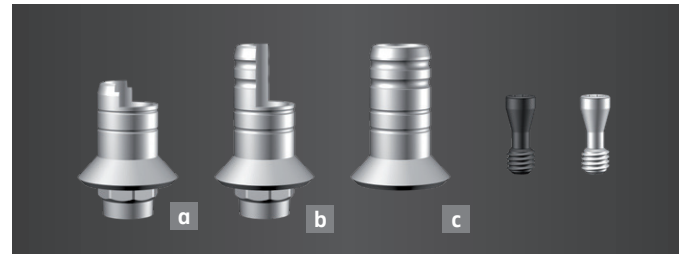
 Consult instructions for use



**Prefab set**

Includes implant screw and laboratory screw

1



**a Ti-Base set**

**b Ti-Base 2CUT set**

**c Ti-Base 2CUT noLock set**

Includes implant screw and laboratory screw

2



**Scanbody set**

Includes implant screw and laboratory screw

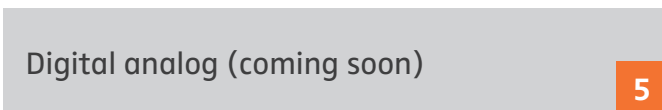
To be used intraoral & extraoral (medical grade product class I)

3



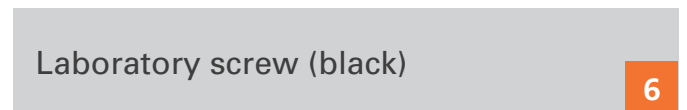
**Lab analog**

4



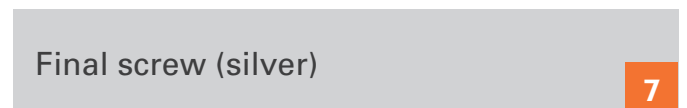
**Digital analog (coming soon)**

5



**Laboratory screw (black)**


6

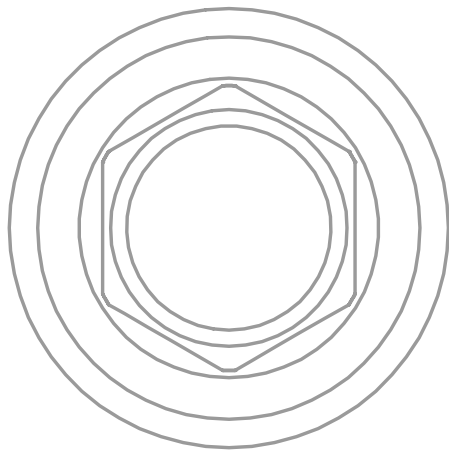


**Final screw (silver)**

7

	SSY 48 (Ø 4,8 mm RN)	SSY 65 (Ø 6,5 mm WN)	Price euro/net
<b>1</b>	DDSSYPF48S	DDSSYPF65S	29,90
<b>2</b> <b>a</b>	DDSSYTB48S	DDSSYTB65S	39,90
<b>b</b>	DDSSYKL48S	DDSSYKL65S	39,90
<b>c</b>	DDSSYNL48S	DDSSYNL65S	39,90
<b>3</b>	DDSSYSB48S	DDSSYSB65S	29,90
<b>4</b>	DDSSYLA48	DDSSYLA65	9,90
<b>5</b>	COMING SOON		19,90
<b>6</b>	DDSSYLS65	DDSSYLS65	6,00
<b>6</b>	DDSSYIS65	DDSSYIS65	9,90
<b>Torque Final screw</b>	35 Ncm	35 Ncm	
<b>Torque Lab screw</b>	10 Ncm	10 Ncm	

 Consult instructions for use



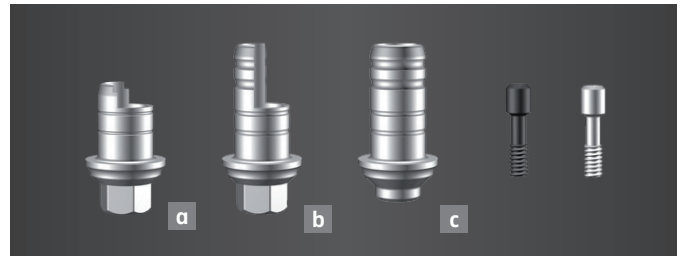
**Coming soon**



**Prefab set**

Includes implant screw and laboratory screw

**1**



**a** Ti-Base set

**b** Ti-Base 2CUT set

**c** Ti-Base 2CUT noLock set

Includes implant screw and laboratory screw

**2**



**Scanbody set**

Includes implant screw and laboratory screw  
To be used intraoral & extraoral (medical grade product class I)

**3**



**Lab analog (coming soon)**

**4**

**Digital analog (coming soon)**

**5**

**Laboratory screw (black)**


**6**

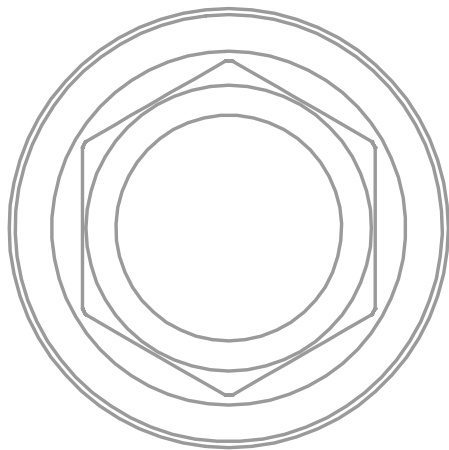
**Final screw (silver)**

**7**



	TSP 35 (Ø 3,5 mm)	TSP 40 (Ø 4,0 mm)	TSP 45 (Ø 4,5 mm)	TSP 50 (Ø 5,0 mm)	TSP 60 (Ø 6,0 mm)	Price euro/net
<b>1</b>	DDTSPPF35S	DDTSPPF40S	DDTSPPF45S	DDTSPPF50S	DDTSPPF60S	29,90
<b>2</b> <b>a</b>	DDTSPTB35S	DDTSPTB40S	DDTSPTB45S	DDTSPTB50S	DDTSPTB60S	39,90
<b>b</b>	DDTSPKL35S	DDTSPKL40S	DDTSPKL45S	DDTSPKL50S	DDTSPKL60S	39,90
<b>c</b>	DDTSPNL35S	DDTSPNL40S	DDTSPNL45S	DDTSPNL50S	DDTSPNL60S	39,90
<b>3</b>	DDTSPSB35S	DDTSPSB40S	DDTSPSB45S	DDTSPSB50S	DDTSPSB60S	29,90
<b>4</b>	COMING SOON					9,90
<b>5</b>	COMING SOON					19,90
<b>6</b>	DDTSPLS35	DDTSPLS60	DDTSPLS60	DDTSPLS60	DDTSPLS60	6,00
<b>7</b>	DDTSPIS35	DDTSPIS60	DDTSPIS60	DDTSPIS60	DDTSPIS60	9,90
Torque Final screw	25 Ncm	25 Ncm	25 Ncm	25 Ncm	25 Ncm	
Torque Lab screw	10 Ncm	10 Ncm	10 Ncm	10 Ncm	10 Ncm	

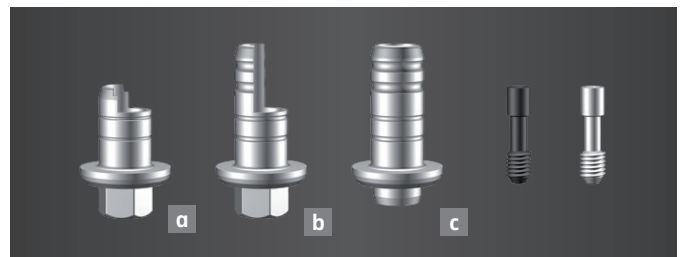
 Consult instructions for use



### Prefab set

Includes implant screw and laboratory screw

1



**a** Ti-Base set

**b** Ti-Base 2CUT set

**c** Ti-Base 2CUT noLock set

Includes implant screw and laboratory screw

2



### Scanbody set

Includes implant screw and laboratory screw  
To be used intraoral & extraoral (medical grade product class I)

3



### Lab analog

4

Digital analog (coming soon)

5


Laboratory screw (black)

6

Final screw (silver)

7

	ZTA 35 (Ø 3,5 mm)	ZTA 45 (Ø 4,5 mm)	ZTA 57 (Ø 5,7 mm)	Price euro/net
<b>1</b>	DDZTAPF35S	DDZTAPF45S	DDZTAPF57S	29,90
<b>2</b> <small>a</small>	DDZTATB35S	DDZTATB45S	DDZTATB57S	39,90
<small>b</small>	DDZTAKL35S	DDZTAKL45S	DDZTAKL57S	39,90
<small>c</small>	DDZTANL35S	DDZTANL45S	DDZTANL57S	39,90
<b>3</b>	DDZTASB35S	DDZTASB45S	DDZTASB57S	29,90
<b>4</b>	DDZTALA35	DDZTALA45	DDZTALA57	9,90
<b>5</b>	COMING SOON			19,90
<b>6</b>	DDZTALS57	DDZTALS57	DDZTALS57	6,00
<b>7</b>	DDZTAIS57	DDZTAIS57	DDZTAIS57	9,90
<b>Torque Final screw</b>	30 Ncm	30 Ncm	30 Ncm	
<b>Torque Lab screw</b>	10 Ncm	10 Ncm	10 Ncm	

 Consult instructions for use

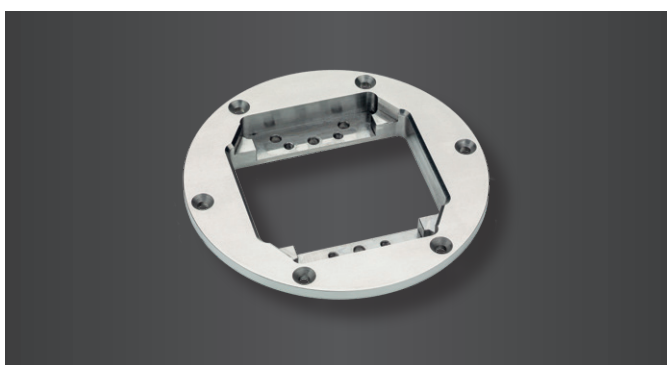
## Accessories for LabTec and other machines

The accessory range is suitable for use in LabTec (25 and 35) and other machines. Profit from our prefab system and start your in-house production of high-quality, individual-patient abutments, with full system independence.



<b>DD prefab starter kit</b>	<b>Price (euro/net)</b>
------------------------------	-------------------------

<b>Order no. CAM 0511</b>	790,00
1 x ring holder	
2 x bars	
4 x M4 screws, black	
6 x M4 screws, silver	
6 x M4 countersunk screws	
1x screwdriver M4 3 mm	
1x screwdriver M4 2,5 mm	
5 x calibration body	
6 x prefabs of your choice	



<b>DD prefab holder (ring)</b>	
--------------------------------	--

<b>Order no. CAM 0511.3</b>	369,00
1 x ring holder	
6 x M4 countersunk screws	

<b>Screw set</b>	
------------------	--

<b>Order no. CAM 0511.4</b>	5,00
6 x M4 countersunk screws	



### DD prefab adapter (bar)

Price (euro/net)

Order no. CAM 0511.5	199,00
2 x bars	
4 x M4 screws, black	
6 x M4 screws, silver	

### Screw set

Order no. CAM 0511.6	5,00
4 x M4 screws, black	
6 x M4 screws, silver	



### Screwdriver (holder)

Order no. CAM 0511.2	14,50
1 x M4 3 mm screwdriver	
Order no. CAM 0511.1	14,50
1 x M4 2,5 mm screwdriver	

### Screwdriver (laboratory screw)

Order no. CAM 0511.8	29,00
1 x screwdriver Torx® T6	

### Calibration body

Order no. CAM 0511.7	6,00
1 x calibration body	



Dental Direkt GmbH  
Industriezentrum 106 – 108 | 32139 Spenge | Tel: +49 5225 86319-0  
E-Mail: [info@dentaldirekt.de](mailto:info@dentaldirekt.de) | [www.dentaldirekt.de](http://www.dentaldirekt.de)

Names marked © are manufacturers' registered trademarks and/or protected by copyright. We do not accept liability for faulty information, or their consequences. Our general conditions of sale and delivery apply. Prices are net and in Euro plus statutory VAT. We reserve the right to make technical modifications, price changes and alterations to delivery times.

